



**PHA TAD KE BOTANICAL GARDEN  
@  
PROJECT SPACE • LUANG PRABANG**

**May 27<sup>th</sup> - June 30<sup>th</sup> 2013**

*Discover the work in progress on our Botaniocal Garden  
with collaborations by: Jean-Pierre Dovat, Albin Duzer  
Alain Menoni, Somdi Oudomsack, Rintala Eggertson Architects  
Nithakone Somsanith, Khamphat Thongchan, Ka Xiong*

## INTRODUCTION

In 2008 when I first visited Laos I fell in love with Luang Prabang, its nature and its people and after having worked for over 20 years in the artworld decided to dedicate myself to this new project - the creation of a Botanical Garden just outside Luang Prabang - Pha Tad Ke. For the last 4 years we have worked on the masterplan, the opening of the land, the constitution of a Laos team of gardeners and botanists and developing contacts with botanical institutions around the world and our local partners.

Pha Tad Ke Botanical Garden is currently under construction in Luang Prabang and it will open to the public in 2016. It is the only Botanical Garden in Laos, with extensive connections to international institutions as well as a member of BGCI and the SE Asian Botanic Gardens Network. We have good relationships with national and local government as well as local NGOs.

Pha Tad Ke is a non-profit organisation supported by the Friends of Pha Tad Ke Associations in France, the Netherlands and Laos as well as the Luang Prabang Fund for Culture and Conservation, an American non-profit 501(c)(3) organisation.

When the garden opens to the public in 2016 it will benefit from international tourist visitors to generate income to sustain itself and organise educational actions and research to help the local population to raise their ecological awareness, put in place the necessary measures to preserve the bio-diversity of Laos and develop sustainable tools of agro-economic development.

*Rik Gadella - General Director Pha Tad Ke Botanical Garden*

**RIK GADELLA**

Introduction

**JEAN-PIERRE DOVAT**

The vice roy's hunting pavillion and other drawings

**ALBIN DUZER**

Photos

**ALAIN MENONI**

Photos

**RINTALA EGGERTSSON ARCHITECTS**

Buildings for Pha Tad Ke Botanical Garden

**NITHAKONE SOMSANITH**

Taleo

**SOMDI OUDOMSACK & KHAMPHAT THONGCHAN**

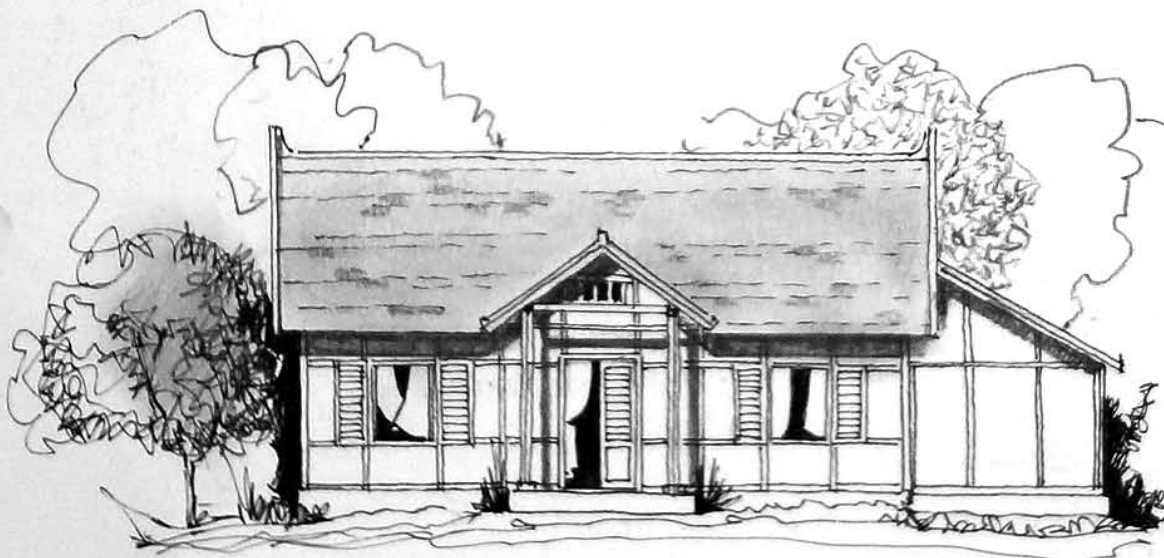
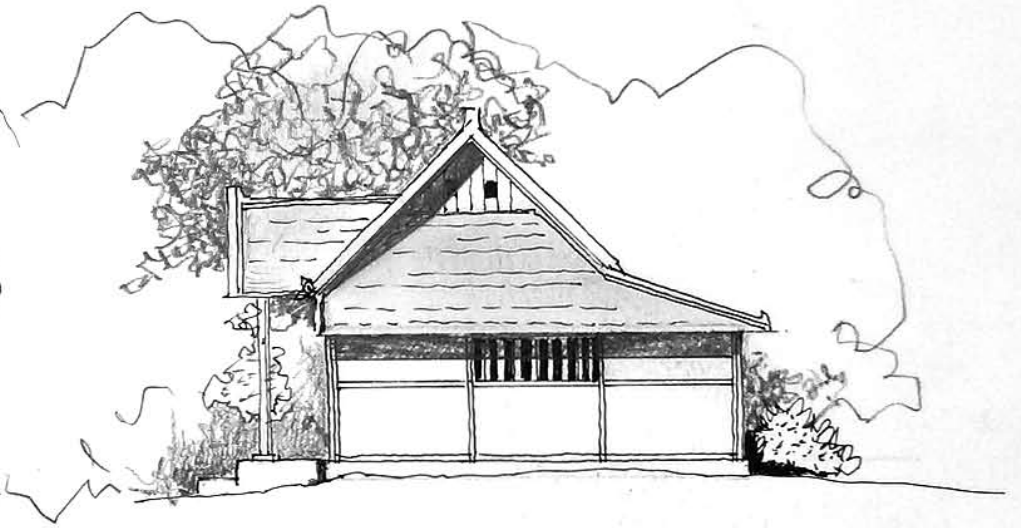
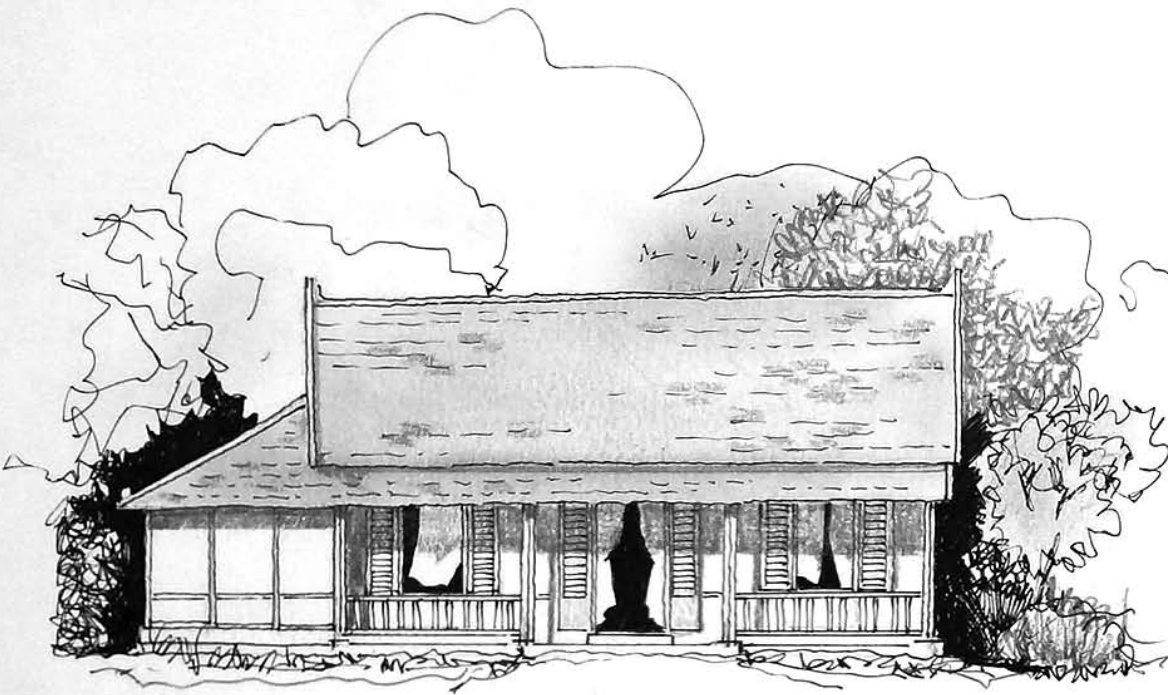
Installations

**KA XIONG**

Photos



JEAN-PIERRE DOVAT



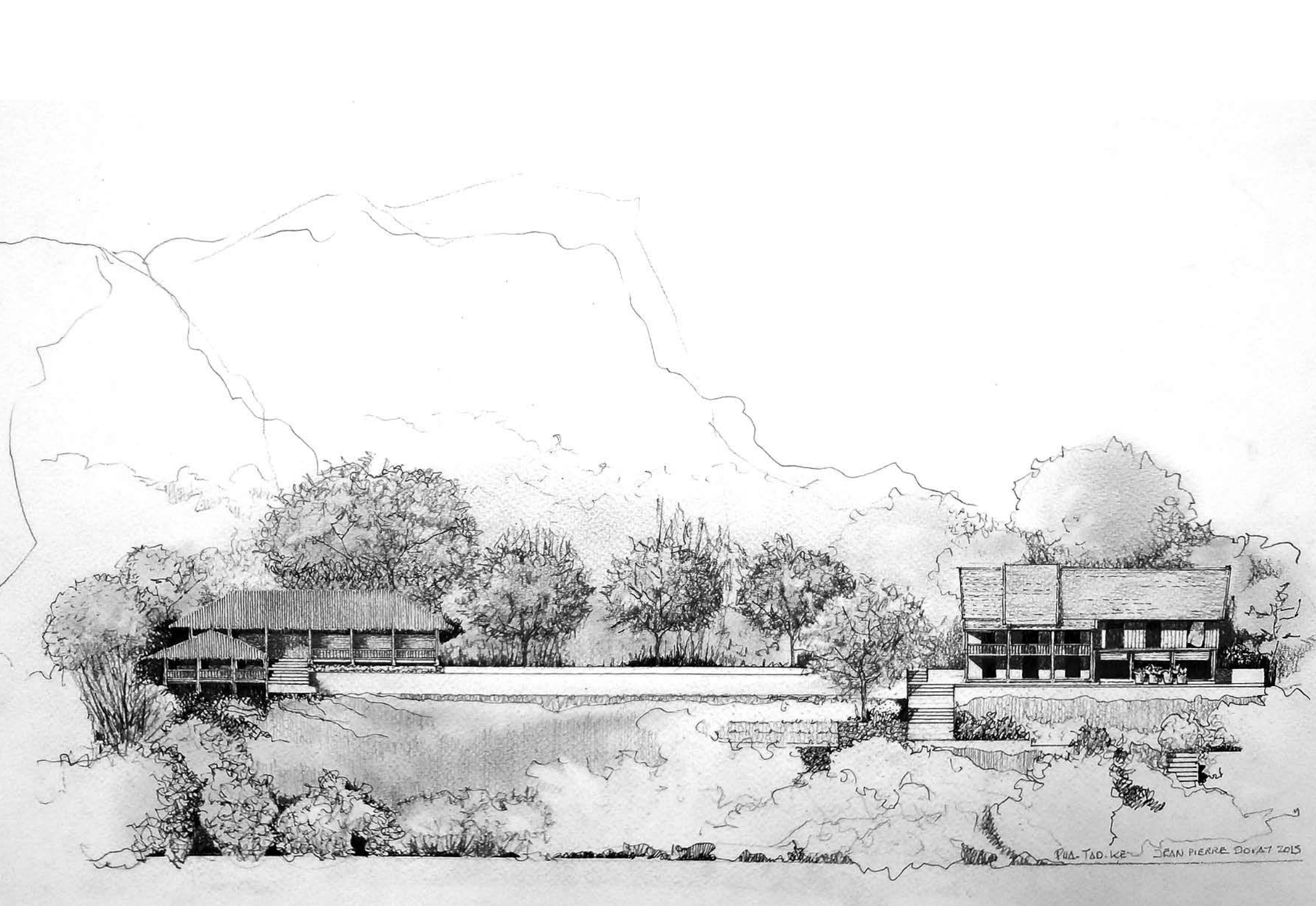
THA TAD KE FORMER HUNTING PAVILION OF THE VICEROY

J.P. DOVAT 2013



RECEPTION DES VISITEURS + BOUTIQUE PHA-TAD-KE  
JEAN-PIERRE DOVAT 10.10.2012





PUA-TAD-KE JEAN PIERRE DOYAT 2015



ALBIN DUZER

























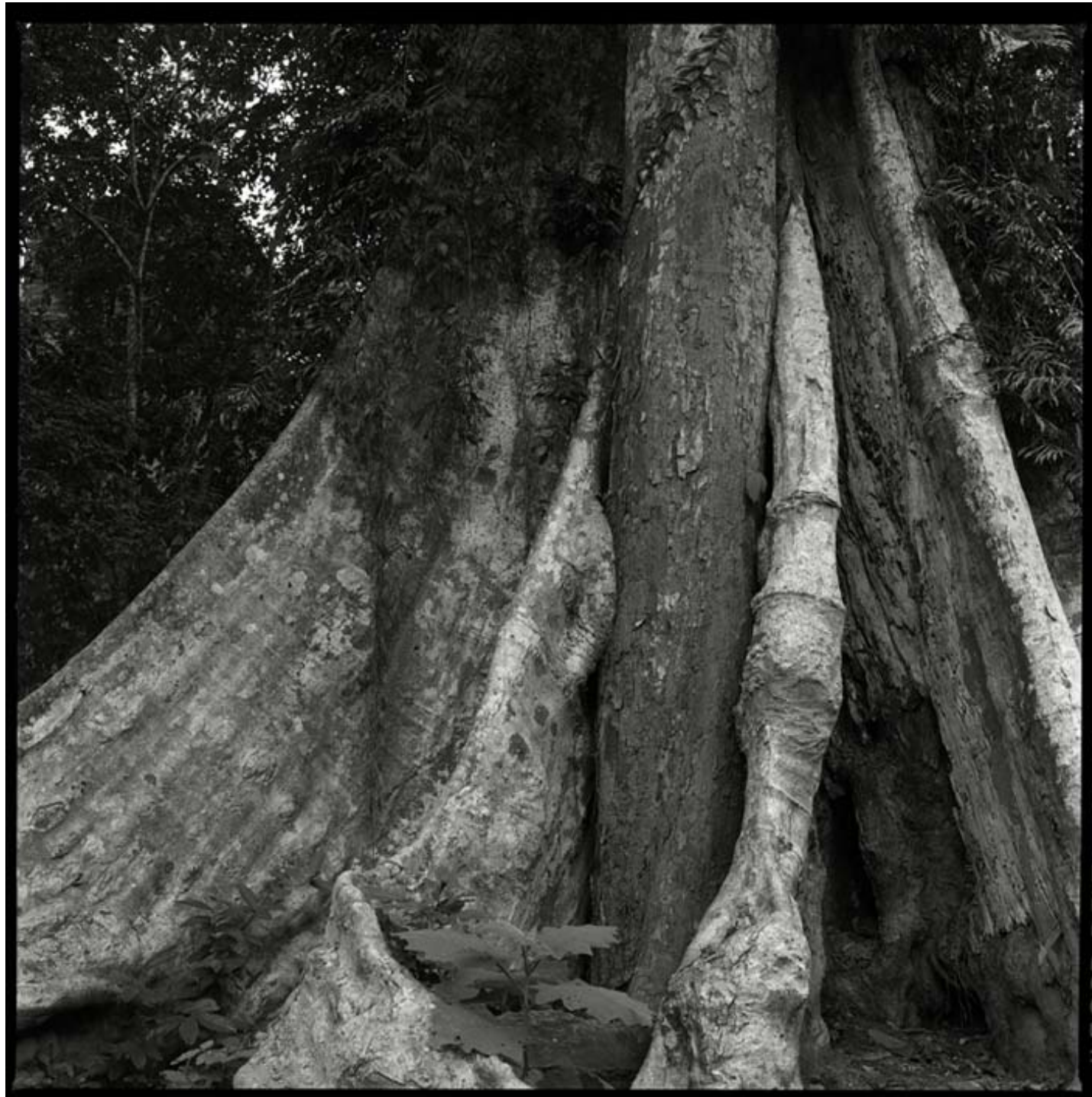


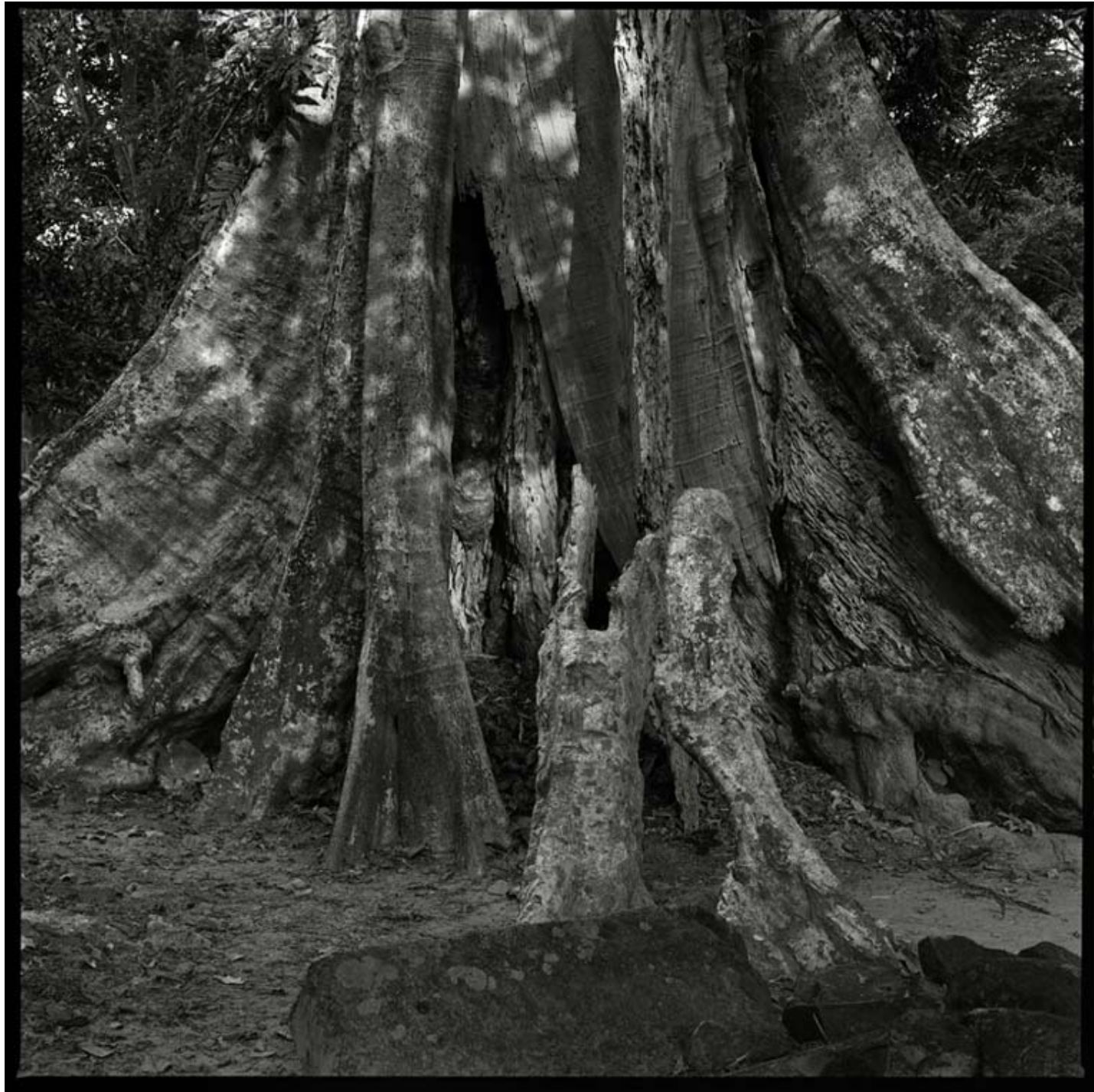




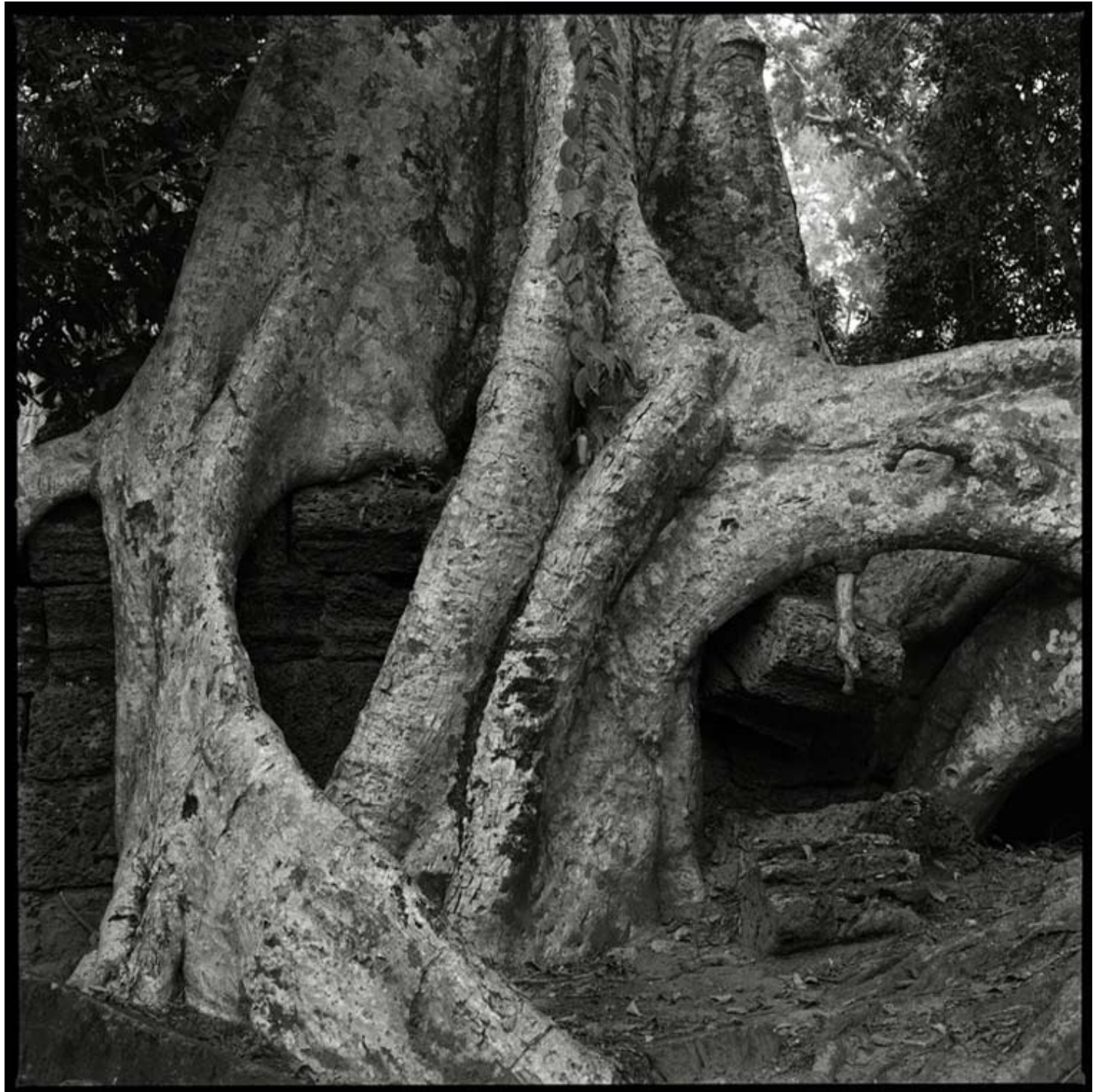


ALAIN MENONI

















BUILDINGS FOR PHA TAD KE BOTANICAL GARDEN

18.01.2013

RINTALA EGGERTSSON ARCHITECTS

## BUILDINGS FOR PHA TAD KE

The three projects presented here are the first three building structures for the Pha Tad Ke Botanical Garden and are specifically designed for future exhibitions. The three sites are carefully selected to fit into an overall experience of the garden and constitute a spine which runs north-south along the eastern part of the site, beginning with a house for orchids, passing by a bridge to the fern garden and ending in a house for butterflies before the visitors continue to the bamboo forest.

The design has been adapted to technical requirements for the exhibition and climatic control for living species.

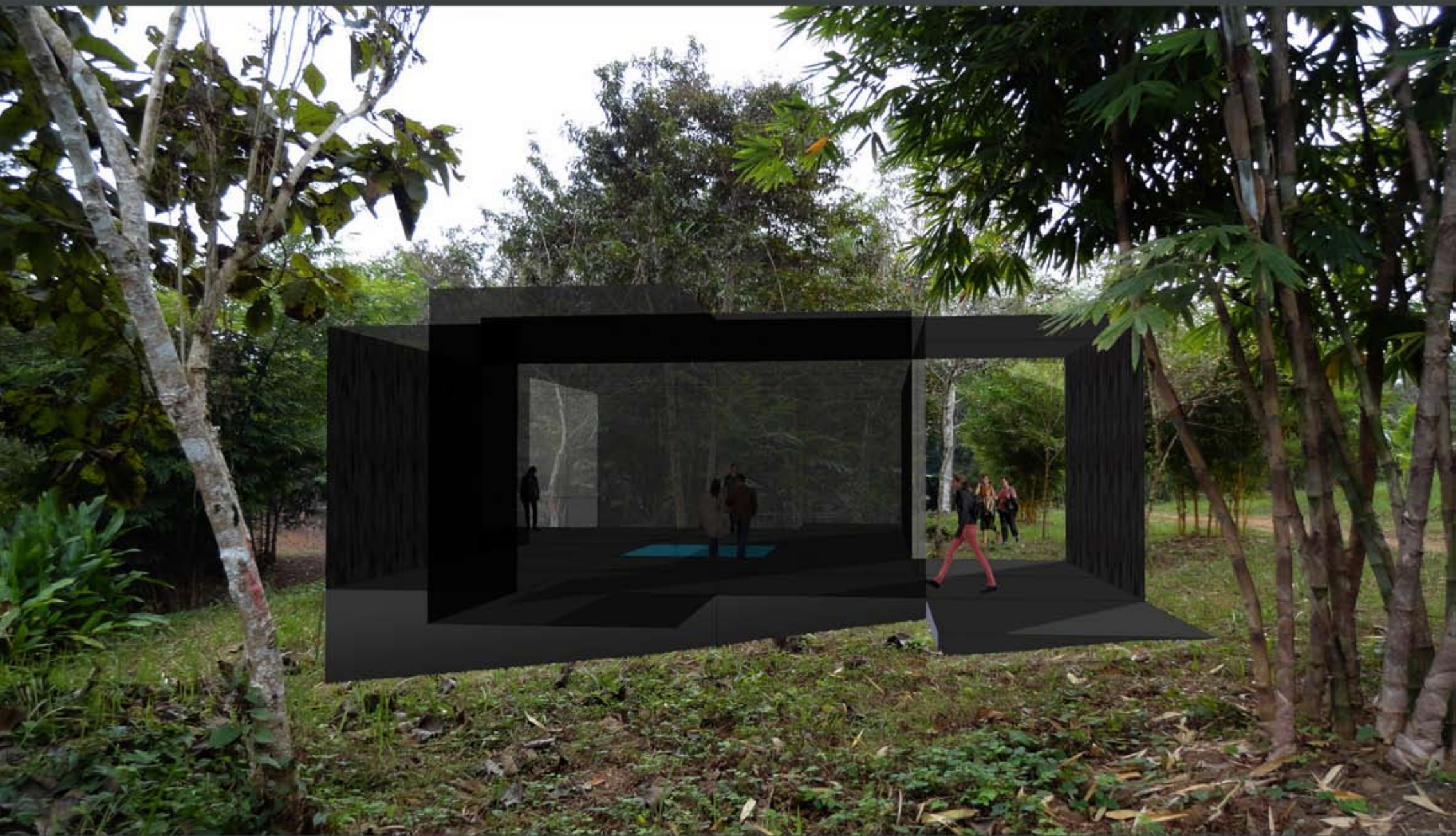
The orchid house (1) is oriented north-south, with an entrance facing the main road and a view from a balcony towards the creek on the east side. The exhibition is located on the ground floor, with a small alcove for special installations facing north and a central pond for maintaining as much humidity in the building as possible. For further humidity control, wooden louvers can be placed on the longitudinal sides and adjusted according to the level of temperature and sunshine. A separate room for drawing orchids is located on a lower level, with an access from the outside and a view towards the creek. The architecture is based on a 3 meter modular system, which makes it easy to build and efficient to maintain.



The bridge (2) is just south of the orchid house, taking the visitors to a fern garden on the east side of the creek. The landscape in this section is undulating softly allowing the visitor to walk on the top of the waves and look at the ferns at the bottom of the waves. The bridge is placed on a level slightly higher than the waves, thus not interfering physically with the features of the landscape. The visitor will have the possibility to find a shelter from the rain or sunshine either under the bridge where it passes over the creek or on the bridge, further into the fern garden.

The butterfly house (3) is in a flat field about 30 meters south of the bridge. The entrance has a twofold function; an information area and a sluice to prevent the butterflies from escaping. The building is composed of a series of narrow building volumes running northwest-southeast which makes it possible to create exhibitions of different sizes and organize a variation of routes through the exhibition space. The visitor will be allowed to enter into the nursery on the southwestern side of the building, a section where one can see the caterpillars before they pass on to the stage to become butterflies.





BUILDINGS FOR PHA TAD KE BOTANICAL GARDEN

ORCHID HOUSE PERSPECTIVE VIEW 1

RINTALA EGGERTSSON ARCHITECTS





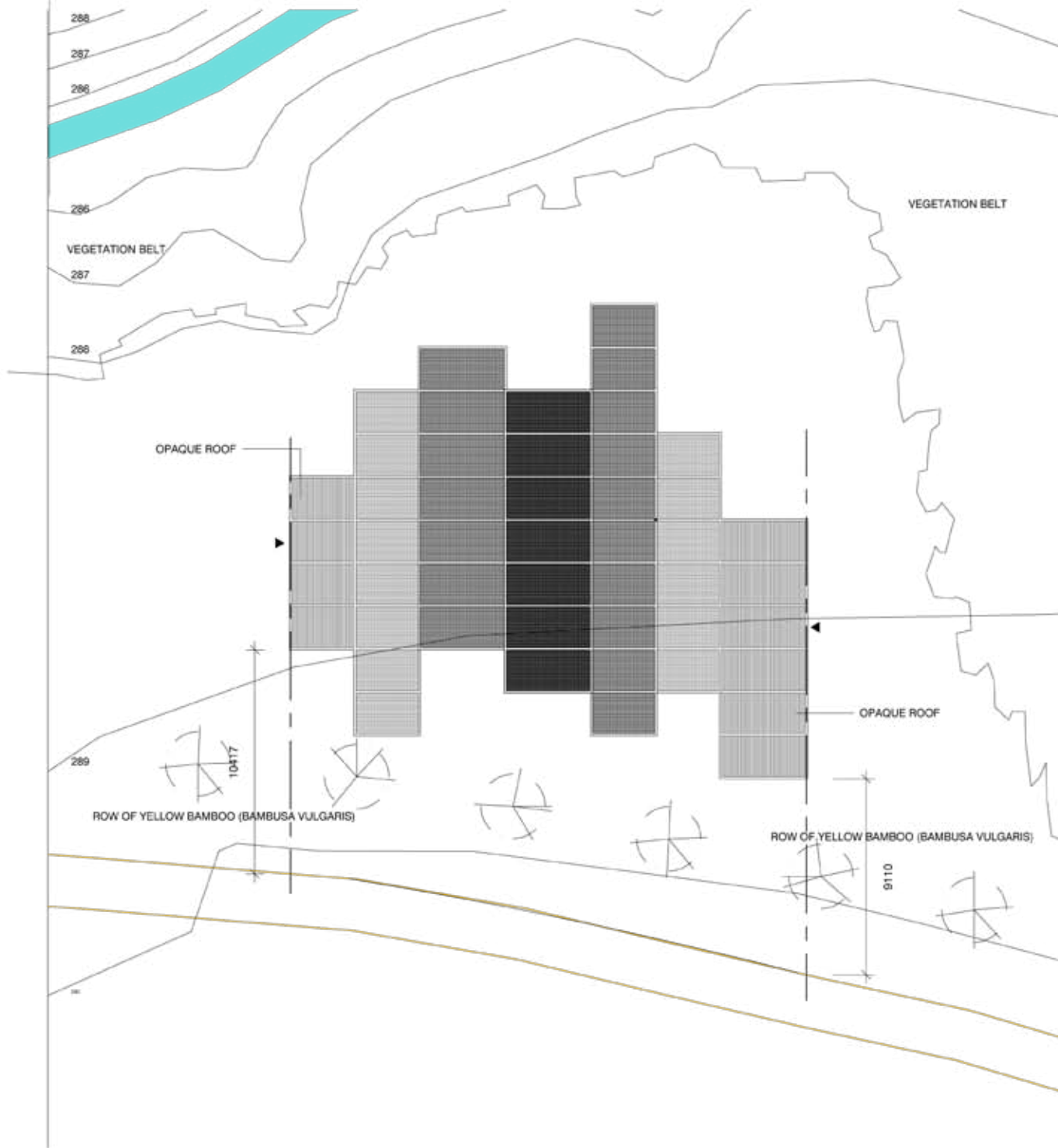




BUILDINGS FOR PHA TAD KE BOTANICAL GARDEN

BUTTERFLY HOUSE PERSPECTIVE VIEW 1

RINTALA EGGERTSSON ARCHITECTS



contacts		drawing nr	rev.
SITEPLAN		ABU001	.
comments			
revision	changes	date	align control
client / project			
PHA TAD KE BOTANICAL GARDEN BUTTERFLY HOUSE			
applies for			
— SITEPLAN — —			
file name		replaced by	
ABR001		—	
date		rev.	
14.01.13		-	
scale		drawing nr	
1:200		ABU001	
align	control		
de	sr		
architect			
RINTALA EGGERTSSON ARCHITECTS			
Bentsebrugata 13f		0476 Oslo	
tlf: +47 22220322		m: +47 48207290	

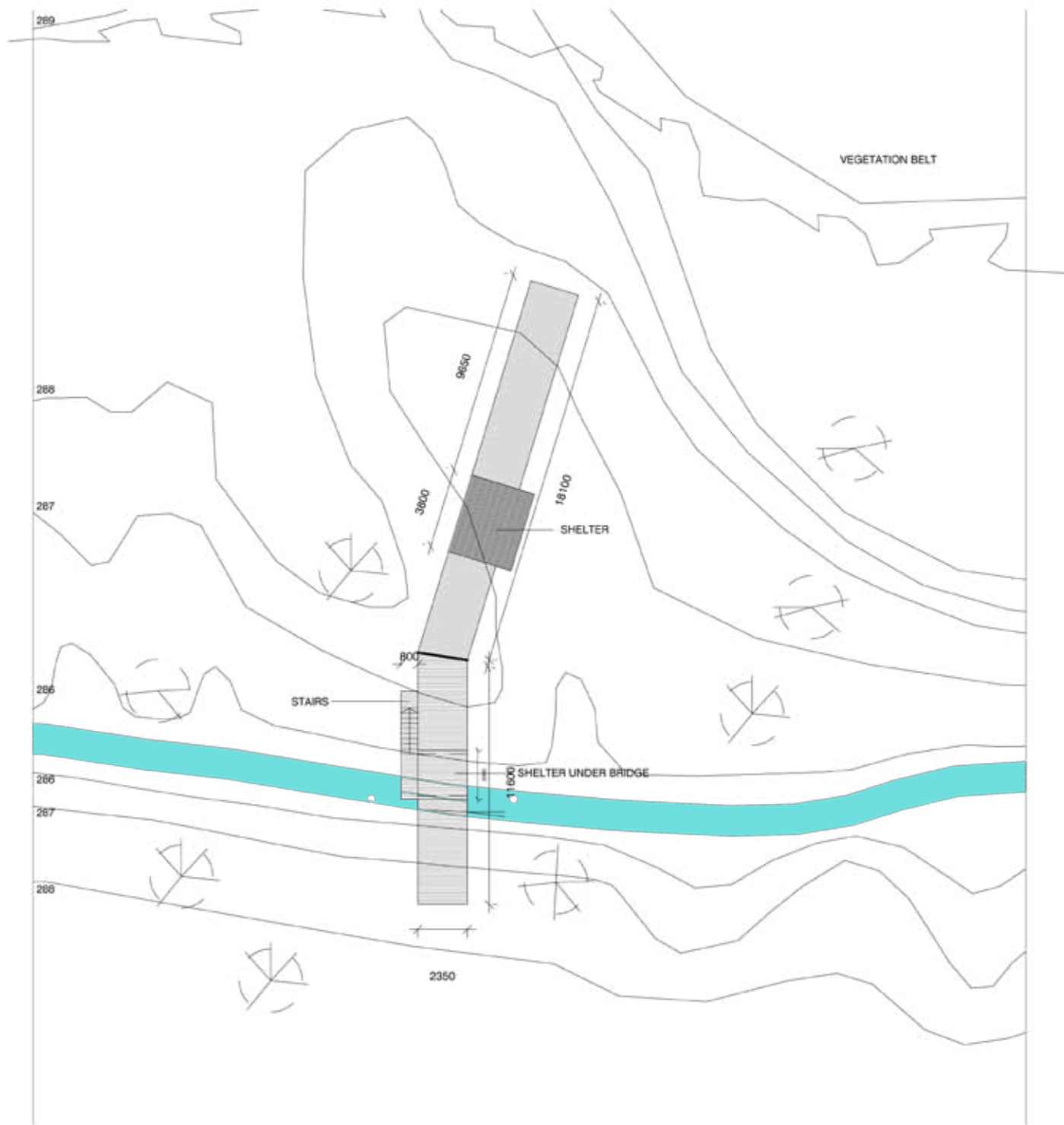




BUILDINGS FOR PHA TAD KE BOTANICAL GARDEN

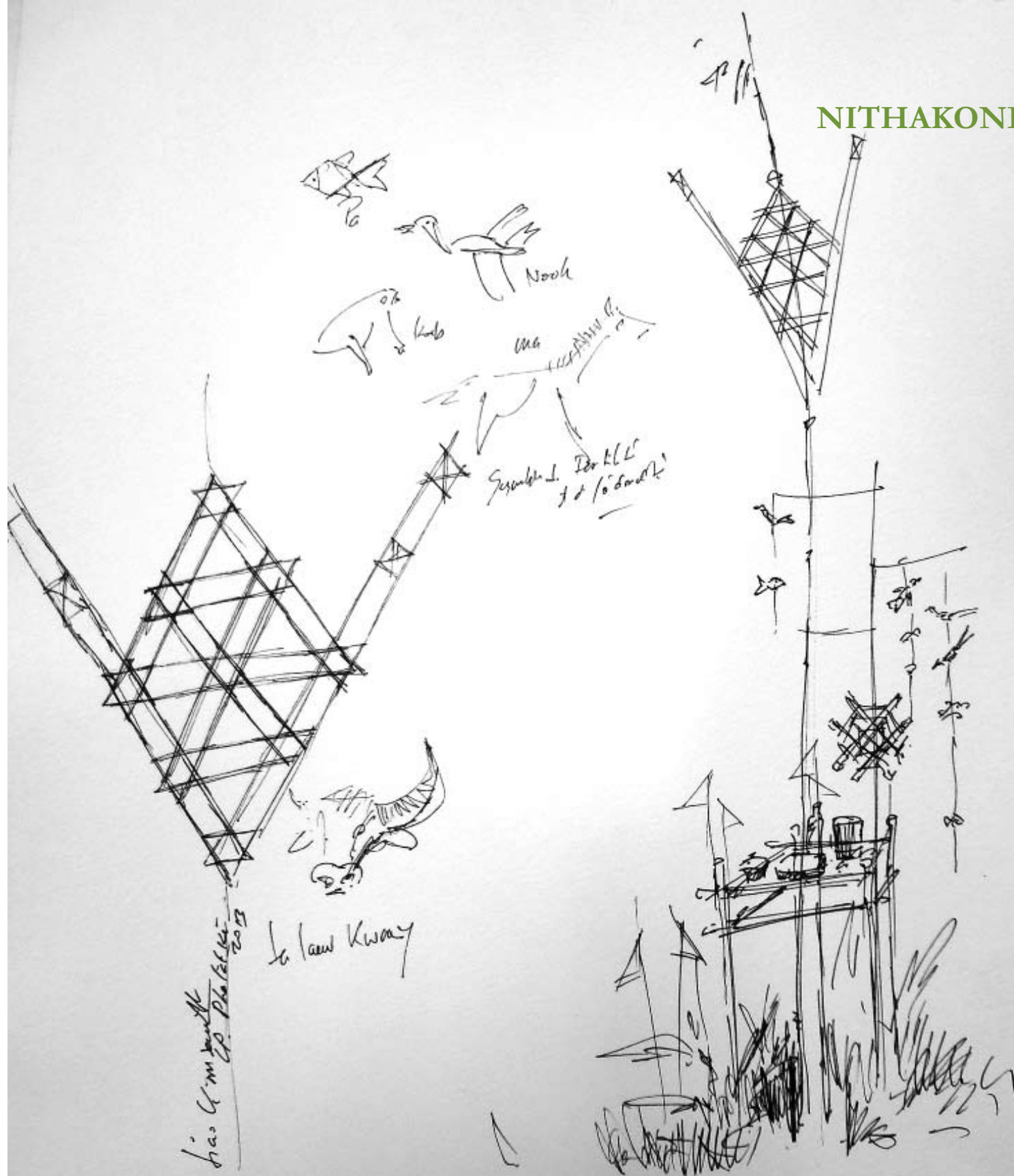
BRIDGE TO FERN GARDEN PERSPECTIVE VIEW 1

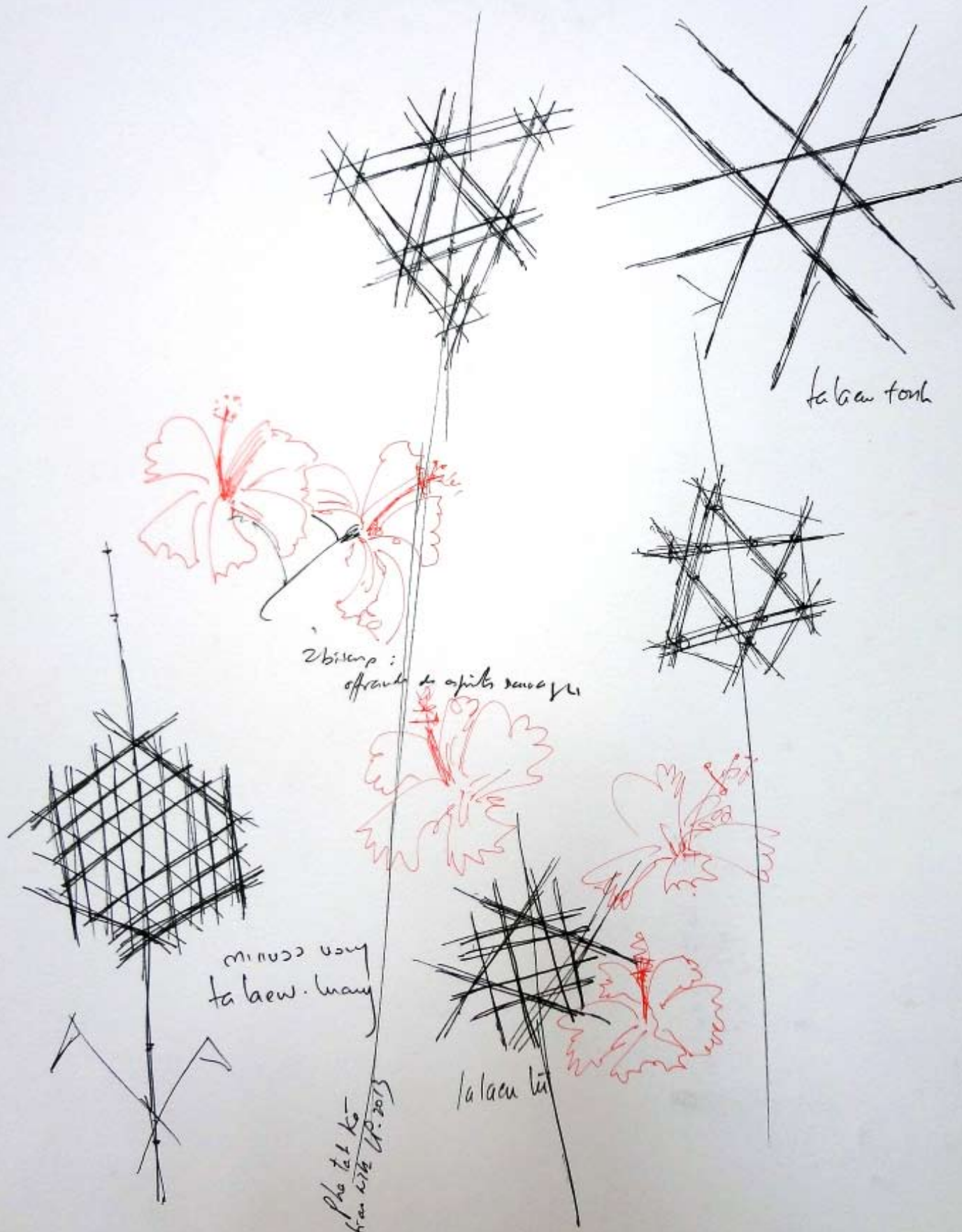
RINTALA EGGERTSSON ARCHITECTS



contacts		drawing nr	rev.
SITEPLAN		ABR001	.
comments			
revision	changes	date	align. control
client / project			
PHA TAD KE BOTANICAL GARDEN BRIDGE TO FERN GARDEN			
applies for			
— SITEPLAN — —			
file name		replaced by	
ABR001		—	
date		rev.	
14.01.13		-	
scale		drawing nr	
1:200		ABR001	
align.	control		
de	sr		
architect			
RINTALA EGGERTSSON ARCHITECTS			
Bentsebrugata 13f		0476 Oslo	
tlf: +47 22220322		m: +47 48207290	







ta laeu tonk

2 bitump :  
ofraute ta apils sauca yu

minuco uoy  
ta laew. may

ta laeu lu

Pho ta 1 ko  
trun 2/16  
1/10.2013



SOMDI OUDOMSACK & KHAMPHAT THONGCHAN



KA XIONG

























*With all our thanks to the contributors who have made this exhibition & publication possible,  
to all our friends who have been at our side since the birth of our project  
and to the architects & artists for their generous contribution to this exhibition.*

**Project Space • Luang Prabang**  
Jean-Pierre Dovat, Director

Kitsalat Road 6  
Thong Chaleuan Village  
PO Box 959  
Luang Prabang  
LAO PDR  
Tel: + 856 71 213091  
[contact@projectspace-luangprabang.com](mailto:contact@projectspace-luangprabang.com)  
[www.projectspace-luangprabang.com](http://www.projectspace-luangprabang.com)

Catalogue design: Rik Gadella

© 2013, Project Space • Luang Prabang, Pha Tad Ke Botanical Garden & the Authors



