

From 2010 to 2014 Jean-Pierre Dovat in collaboration with Rik Gadella organized in Project Space • Luang Prabang over 16 thematic exhibitions showcasing arts, crafts and contemporary artists from Southeast Asia. Photography from young local talent, ceremonial paintings from the Yao Mien ethnic minority group, contemporary art, vintage textiles and traditional arts from Laos all found their place in a beautiful three-story building in the historical heart of the UNESCO heritage town of Luang Prabang.

Project Space will now find a new home in the serene Pha Tad Ke Botanical Garden that opened to the public in November 2016. Since 2008 a team of 50 dedicated Lao under the direction of Rik Gadella worked to create the first and only botanical garden of Laos. Focusing on the flora of Laos, Pha Tad Ke reserves a special place for the ethno-botany of Laos, biodiversity conservation through in and ex-situ conservation projects, permaculture and alley cropping demonstration and research facilities.

In 2019 our combined synergies started this new and exciting phase to create Project Space • Pha Tad Ke. Beautifully restored wooden Lue houses will host exhibitions, workshops and multi-disciplinary projects in the heart of Pha Tad Ke Botanical Garden. A small study room will house a research library and a contemporary building will house and showcase our budding collection of contemporary Lao artists.

An important part of our resources will be used to provide scholarships for art students, and to build a comprehensive collection of contemporary art from the 1960'ties till now. Accommodating residencies for contemporary artists, designers, and writers to open new pathways for research and creation we will put in place an exciting series of workshops and lectures from local and international artists and researchers to engage international visitors and to open and stimulate creative paths for young talents from Laos.

When covid arrived we had finished the first artist residency house, but we had to stop the construction of the first gallery building, which was finished at 80%. We are currently looking for the budget to finish this which is estimated at 32.000\$ including the exhibition lights, the library shelves and everything.

In the meantime, we've not been idle, and in collaboration with the Heinrich Boll Foundation we're about to wrap up six-months research project: *"Women in Lao Contemporary Art & Culture from 1975 till Now"*. With support from a Lao Culture Grant from the SDC we will start in 2023 a series of workshops, exhibitions, and online publications in Luang Prabang, Vientiane and Savannakhet.

### **Jean-Pierre Dovat**

A regular visitor to China and Southeast Asia since 1976, Jean-Pierre Dovat has developed a keen interest in Asian culture. In 2004, a trip down the Mekong River took him to Luang Prabang. He immediately fell under the spell of this ancient town and with his associate Khamphanh Inthavong, he created Mekong Estate with the aim of building a collection of long-term rental houses in a style that respected the town's UNESCO protected colonial Lao architecture.

### **Rik Gadella**

Established in the art world in Amsterdam, Paris and New York as a publisher, gallerist and curator for over 25 years Rik Gadella is the creator of world-renowned events such as Paris Photo and Parcours des Mondes and published over 100 books of Art, Philosophy, Poetry, Essays and Artist Books as well as four magazines. In 2008 he visited Luang Prabang for a short holiday and fell in love with the town and its natural surroundings. He decided to move here to create the first botanical garden of Laos.



**Artist Residency House 1 (finished)**



**Main Gallery and Library Building 1 (80%) finished**

**Project Space • Pha Tad Ke**

rik.gadella@pha-tad-ke.com

Ban Wat That, PO Box 959, 06000 Luang Prabang, Laos

## **Project Space • Pha Tad Ke - Phase 2**

The second phase of construction will include two more artist residency houses as well as extension of the gallery space with 2 traditional Lue Houses and a contemporary concrete building of 26 meters long and 6 meters wide with a flat grass roof and a basement for climate-controlled storage of works.

### **All in all, upon completion Project Space @ Pha Tad Ke will consist of:**

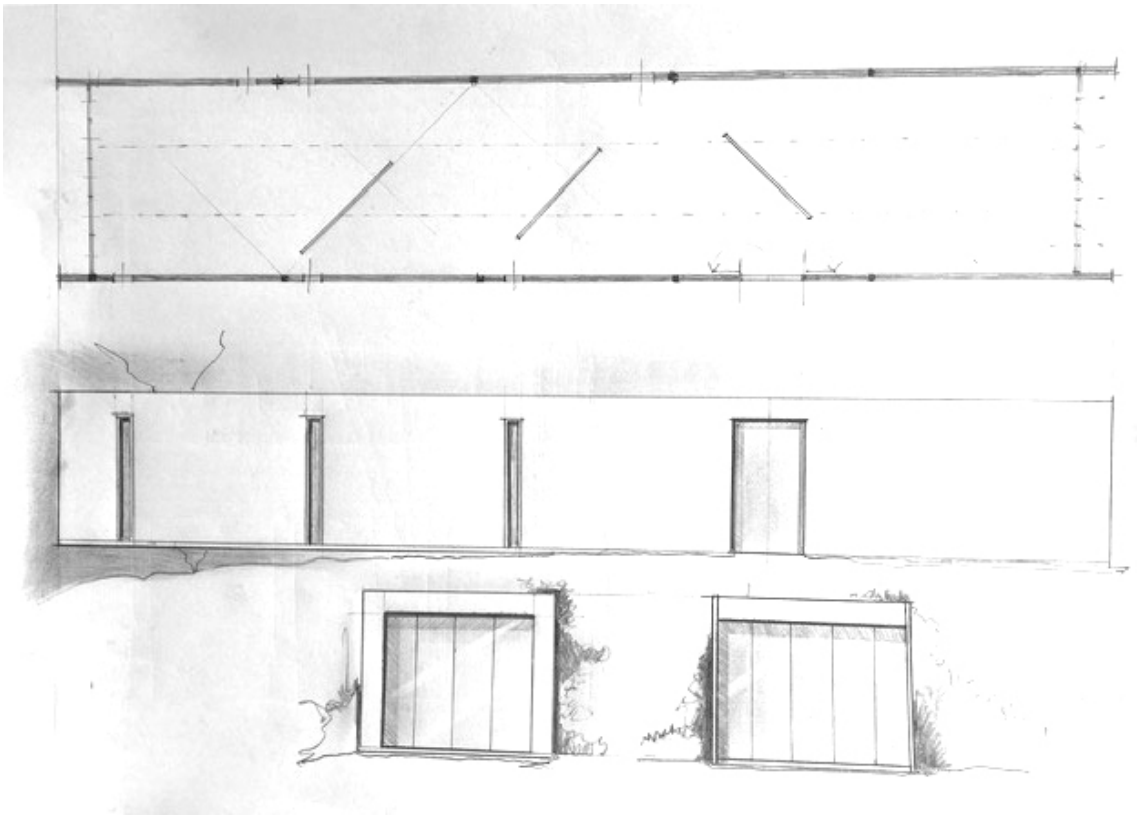
3 artist residency houses

Gallery building 1 Lue wooden house with a library / office and exhibition room of 60m<sup>2</sup>

Gallery building 2 and 3 Lue wooden houses each 80m<sup>2</sup> and downstairs all open for workshops etc.

Gallery building 4 contemporary concrete building of 150m<sup>2</sup> and climate-controlled basement storage.

300m<sup>2</sup> exhibition space; 150m<sup>2</sup> secure storage; 200m<sup>2</sup> open plan downstairs for workshop, events etc.



**Contemporary concrete building 26 meters long, basement climate-controlled storage works**